

V Series

Model V submersible sewage pump, a branch of single-phase and three-phase drainage pumps, will be your ideal drainage helper. It can work safely and efficiently at high flux with the feature of complete heads. The float switch can automatically control on and off with the change of the liquor level. The protector in the motor can automatically cut off the power when it overheated or overcurrent, thus guarantee the security and reliability of pump's run even in the atrocious environment.



V180F/250F



V370



V450/550

Specification

- 5m maximum immersion depth;
- Liquid Temperature up to 40°C;
- Trans Medium's PH :4-10;
- Density of the trans medium limit: 1.2*10 kg/m³
- Insulation class: F
- Protection class: IP68
- Cable length: 8m

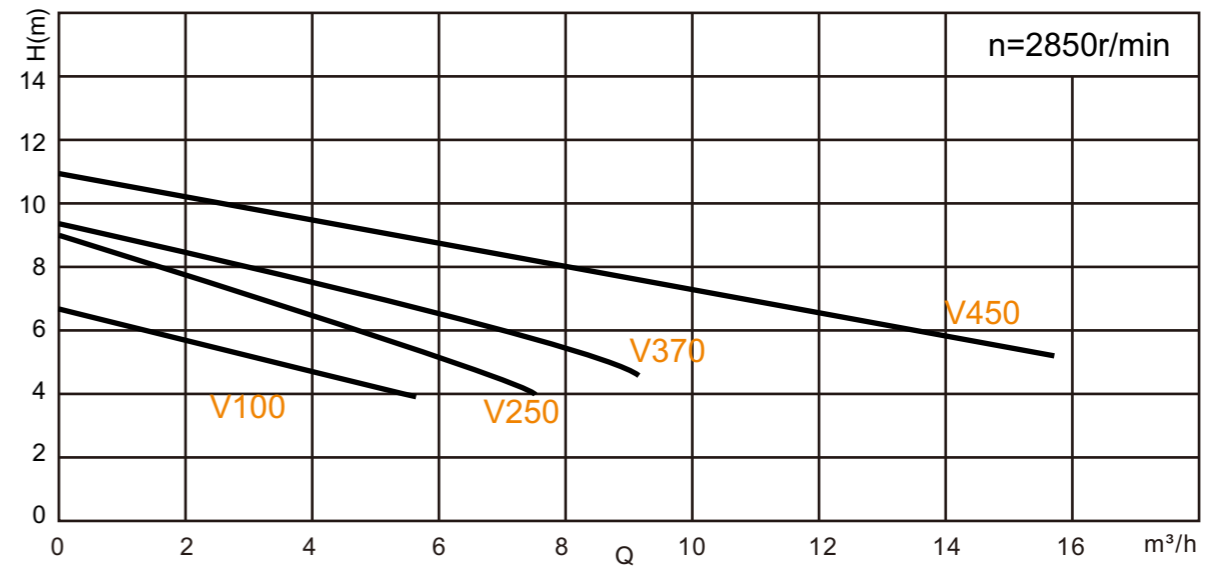
Application

- Wast water drainage in factories, construction sites
- Drainage system in municipal sewage treatment
- Drainage station in residential quarters
- Methane pools and field irrigation in country side

Special features on request

- Other voltages
- The length of cable is optional

Performance Curve



Diagram



Item No.	Part name	Material
01	Bolt	AISI201
09	Capacitor cover	HT200
26	Motor Casing	AISI304
15	Float switch	Option
37	Connection part	HT200
48	Pump body	HT200
44	Impeller	HT200
33	Ball bearing	C&U
32	Rotor	45# Carbon Steel

Model	Power	Outlet Diameter	Voltage	Max.Flow	Max.Head	Rated Flow	Rated Head	Weighr	Packing dimension
	(W)	(mm)	(V)	(L/min)	(M)	(m³/h)	(m)	(kg)	(cm)
V180(F)	180	25 32 40	220/380	133	6	5	5	9	18*19*40
V250(F)	250	25 32 40	220/380	150	7.5	5	5	9.8	18*19*40
V370(F)	370	40	220/380	160	9	5	7	13	18*19*43
V450(F)	450	50	220/380	260	9	7	7	17	25.5*19.5*48.5
V550(F)	550	50	220/380	280	10	7	10	18	25.5*19.5*48.5

V series

Model V submersible sewage pump, a branch of single-phase and three-phase drainage pumps, will be your ideal drainage helper.

It can work safely and efficiently at high flux with the feature of complete heads. The float switch can automatically control on and off with the change of the liquor level

The protector in the motor can automatically cut off the power when it overheated or over-current, thus guarantee the security and reliability of pump's run even in the atrocious environment.



V750



V750F

Specification

- 5m maximum immersion depth ;
- Liquid Temperature up to 40°C ;
- Trans Medium's PH :4-10;
- Density of the trans medium limit:1.2*10 kg/m³
- Insulation class: F
- Protection class: Ip68
- Cable length: 8m

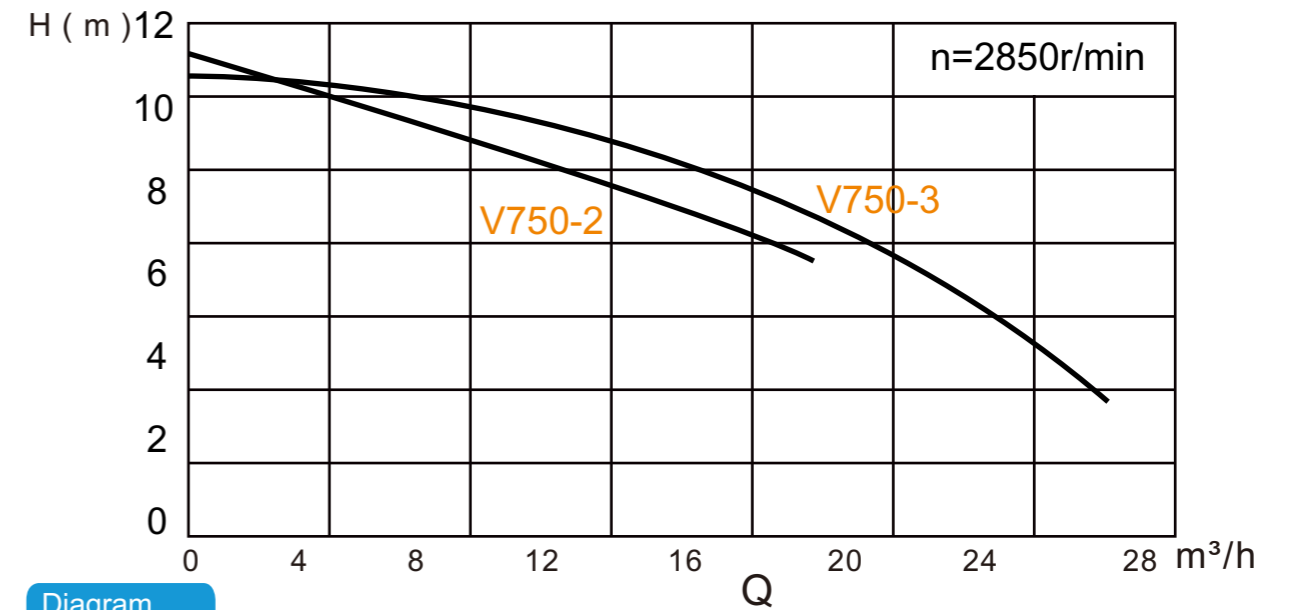
Application

- Wast water drainage in factories, construction sites
- Drainage system in municipal sewage treatment
- Drainage station in residential quarters
- Methane pools and field irrigation in country side

Special features on request

- Other voltages
- The length of cable is optional Model

Performance Curve



Diagram



Item No.	Part name	Material
01	Bolt	AISI201
18	Capacitor cover	HT200
31	Motor Casing	AISI304
58	Float switch	Option
36	Connection part	HT200
53	Pump body	HT200
45	Impeller	HT200
33	Ball bearing	C&U
32	Rotor	45# Carbon Steel

Model	Power	Outlet Diameter	Voltage	Max.Flow	Max.Head	Rated Flow	Rated Head	Weighr	Packing dimension
	(W)	(mm)	(V)	(L/min)	(M)	(m³/h)	(m)	(kg)	(cm)
V750(F)	180750	50	220/380	300	12	10	10	20	268*19.5*53
V750-3(F)	250	80	220/380	500	10	10	10	21	26*19.5*53



V1500



V1500F

Specification

- 5 m maximum immersion depth;
- Liquid Temperature up to 40°C ;
- Trans Medium's PH :4-10;
- Density of the trans medium limit:1.2*10 kg/m³
- Insulation class: F
- Protection class: IP68
- Cable length: 8m

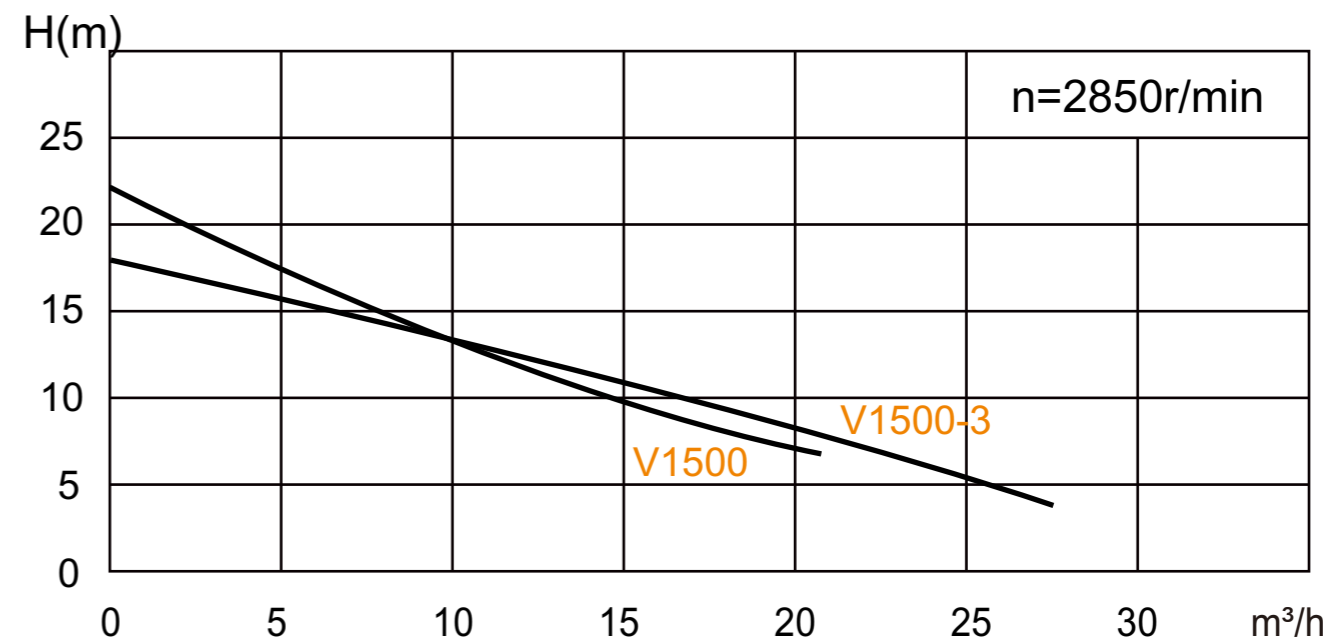
Application

- Waste water drainage in factories,construction sites
- Drainage system in municipal sewage treatment
- Drainage station in residential quarters
- Methane pools and field irrigation in country side

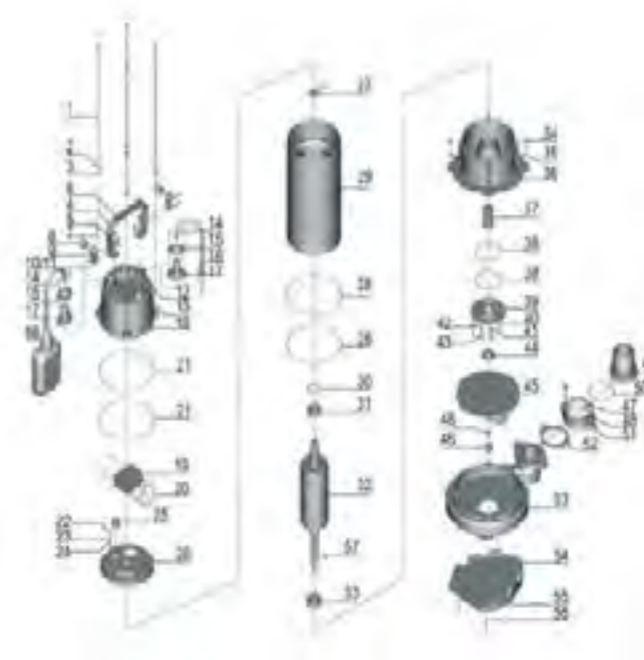
Special features on request

- Other voltages
- The length of cable is optional

Performance Curve



Diagram



Item No.	Part name	Material
01	Bolt	AISI201
18	Capacitor cover	HT200
29	Motor Casing	AISI304
58	Float switch	Option
26	Connection part	HT200
53	Pump body	HT200
45	Impeller	HT200
31	Ball bearing	C&U
32	Rotor	45# Carbon Steel
54	Base plate	HT200

Model	Power	Outlet Diameter	Voltage	Max.Flow	Max.Head	Rated Flow	Rated Head	Weighr	Packing dimension
	(W)	(mm)	(V)	(L/min)	(M)	(m³/h)	(m)	(kg)	(cm)
V1500-2"	1.5	50	220/380	300	24	10	15	25	28*22*56
V1500-3"	1.5	80	220/380	500	18	25	7	26	25*25*58



V1500



V1500F

Specification

- 5 m maximum immersion depth;
- Liquid Temperature up to 4°C ;
- Trans Medium's PH :4-10;
- Density of the trans medium limit:1.2*10 kg/m³
- Insulation class: F
- Protection class: IP68
- Cable length: 8m

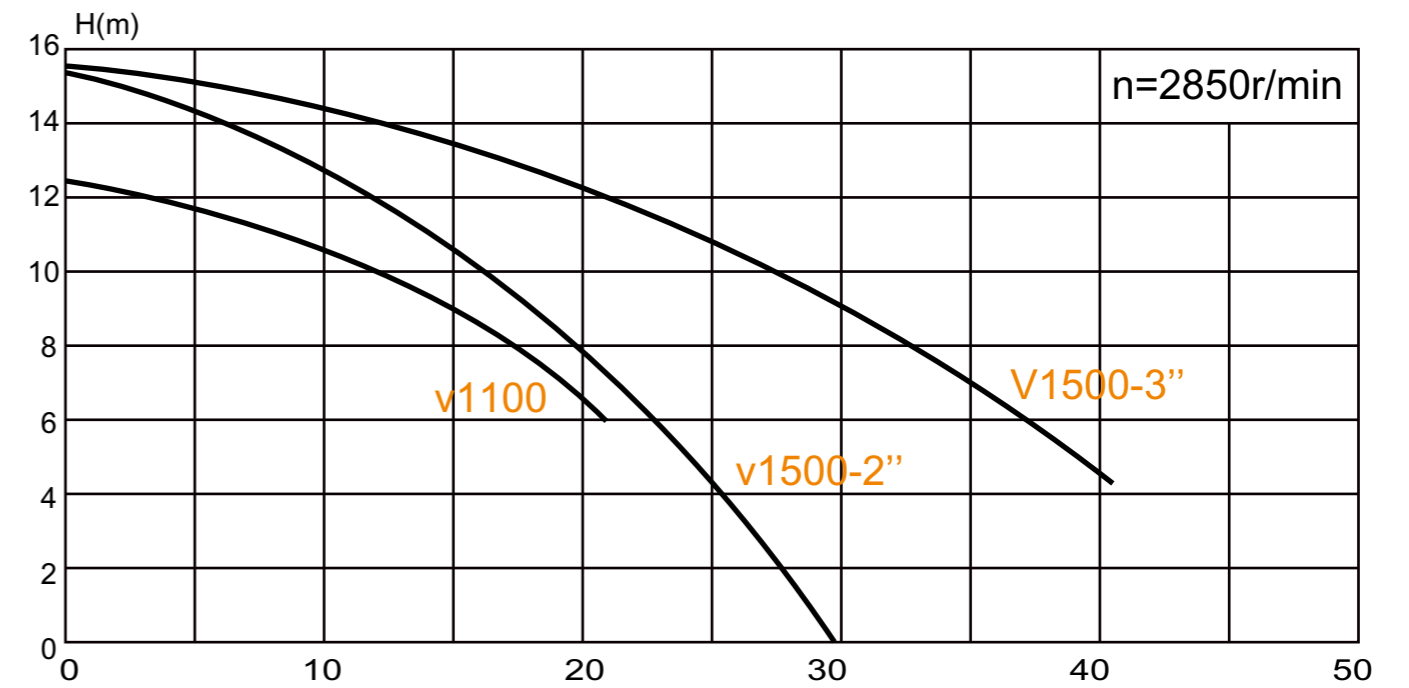
Application

- Wast water drainage in factories,construction sites
- Drainage system in municipal sewage treatment
- Drainage station in residential quarters
- Methane pools and field irrigation in country side

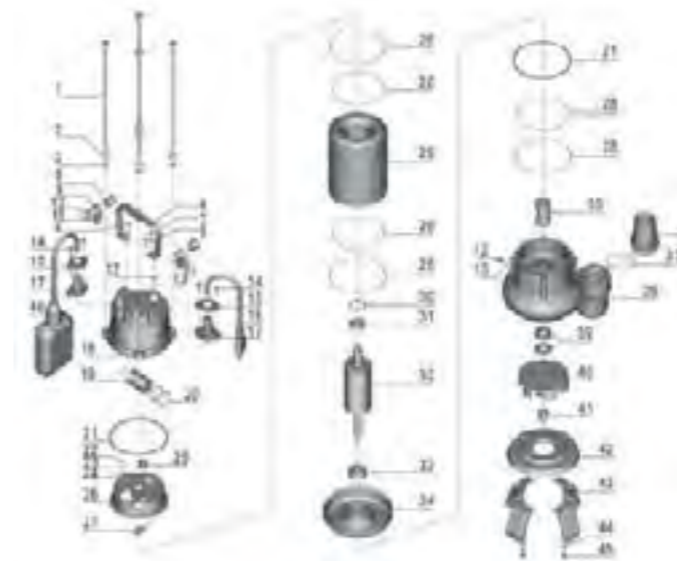
Special features on

- Other voltages
- The length of cable is optional

Performance Curve



Diagram



Item No.	Part name	Material
01	Bolt	AISI201
17	Capacitor cover	HT200
24	Motor Casing	AISI304
54	Float switch	Option
21	Connection part	HT200
48	Pump body	HT200
39	Impeller	HT200
29	Ball bearing	C&U
27	Rotor	45# Carbon Steel
52	Base plate	AISI304

Model	Power (W)	Outlet Diameter (mm)	Voltage (V)	Max.Flow (L/min)	Max.Head (M)	Rated Flow (m ³ /h)	Rated Head (m)	Weighr (kg)	Packing dimension (cm)
50/60Hz									
V1100(F)	1.1	50	220/380	350	13	15	10	24	28*22*56
V1500-2''(F)	1.5	50	220/380	500	16	10	15	25	28*22*56
V1500-3''(F)	1.5	80	220/380	700	16	25	7	26	28*22*60



V2200-3



V2200-4

Specification

- 5m maximum immersion depth;
- Liquid Temperature up to 40°C ;
- Trans Medium's PH :4-10;
- Density of the trans medium limit:1.2*10 kg/m³
- Insulation class: F
- Protection class: IP68
- Cable length: 8m

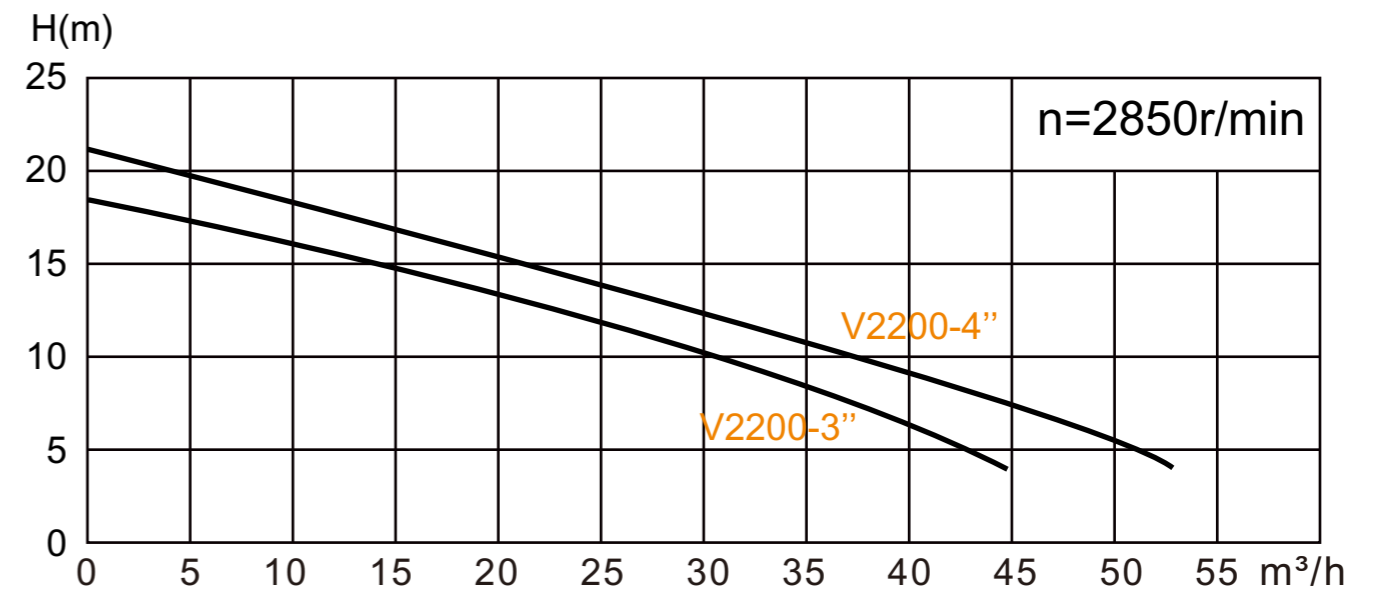
Application

- Waste water drainage in factories,construction sites
- Drainage system in municipal sewage treatment
- Drainage station in residential quarters
- Methane pools and field irrigation in country side

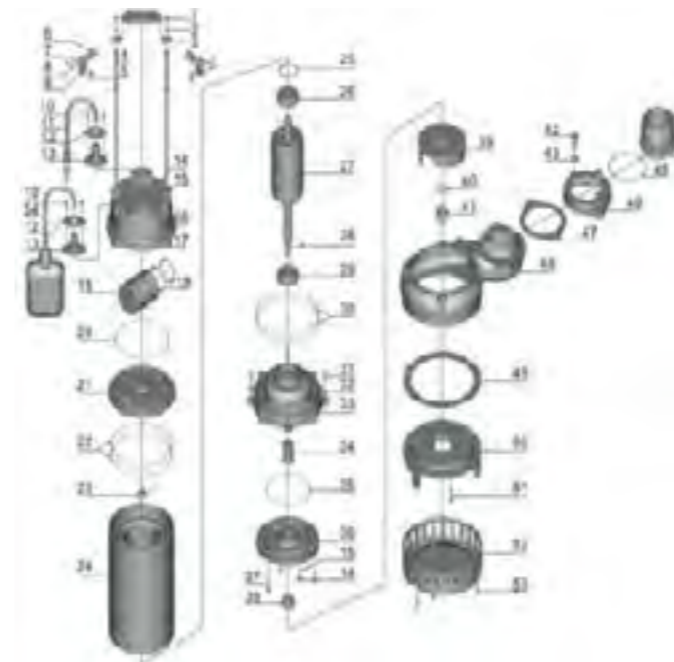
Special features on request

- Other voltages
- The length of cable is optional

Performance Curve



Diagram



Item No.	Part name	Material
01	Bolt	AISI201
17	Capacitor cover	HT200
24	Motor Casing	AISI304
54	Float switch	Option
21	Connection part	HT200
48	Pump body	HT200
39	Impeller	HT200
29	Ball bearing	C&U
27	Rotor	45# Carbon Steel
52	Base plate	AISI304

Model	Power	Outlet Diameter	Voltage	Max.Flow	Max.Head	Rated Flow	Rated Head	Weight	Packing dimension
	(W)	(mm)	(V)	(L/min)	(M)	(m³/h)	(m)	(kg)	(cm)
V2200-3"	2.2	80	220/380	760	18	26	10	34	58*22*33
V2200-4"	2.2	100	220/380	830	20	40	9	37	58*24*36



Specification

- 5m maximum immersion depth;
- Liquid Temperature up to 40°C;
- Trans Medium's PH :4-10;
- Density of the trans medium limit:1.2*10 kg/m³
- Insulation class: F
- Protection class: IP68
- Cable length: 8m

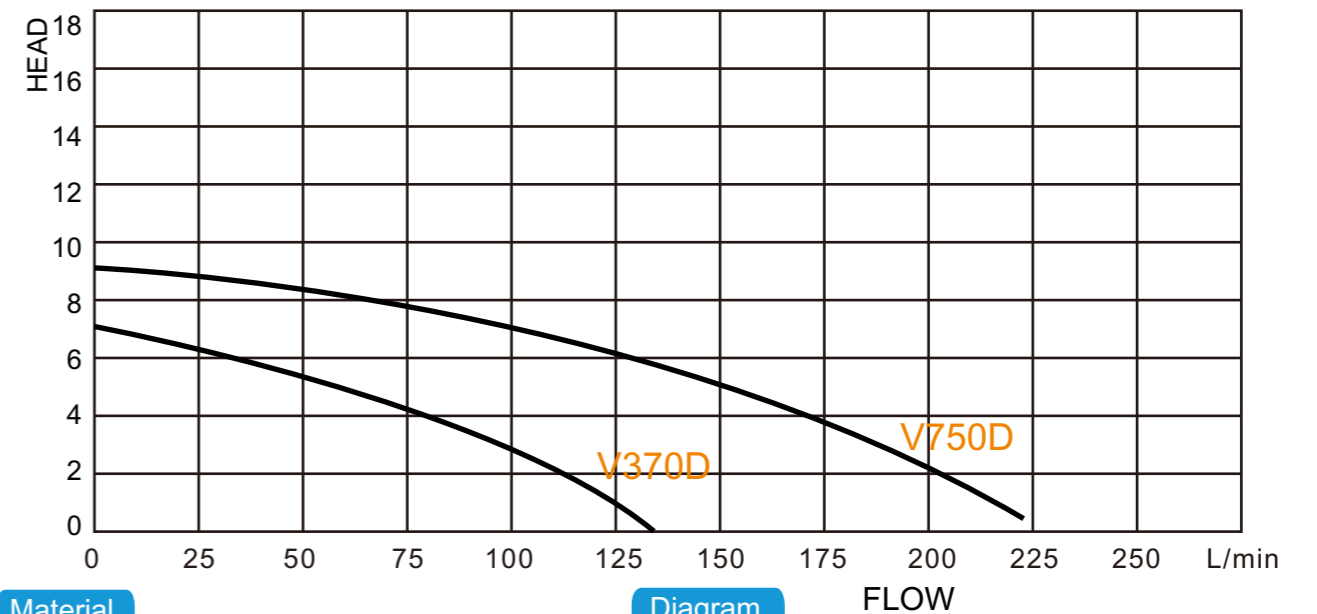
Application

- Wast water drainage in factories,construction sites
- Drainage system in municipal sewage treatment
- Drainage station in residential quarters
- Methane pools and field irrigation in country side

Special features on request

- Other voltages
- The length of cable is optional

Performance Curve



Material

Item No.	Part name	Material
08	Protector	
18	Upper Cover	Cast Iron
29	Motor Body	SS304
27	Thermal Poretctor	
31	Bearing	C&U Ball Bearing
32	Handle	Shaft AISI420SS
37	Rotor	Ceramic-SiC/Carbon-Ceramic
39	Oil Chamber Cover	Cast Iron
42	Oil Seal	
46	Impeller	Cast Iron
45	Pump Body	Cast Iron

Diagram



Model	Power	Outlet Diameter	Voltage	Max.Flow	Max.Head	Rated Flow	Rated Head	Weighr	Packing dimension
	(W)	(mm)	(V)	(L/min)	(M)	(m ³ /h)	(m)	(kg)	(cm)
V370D(F)	370	40	220/380	140	7	5	7	11	58*24*28
V750D(F)	750	50	220/380	250	9	10	9	18	58*24*28



V1100D

V1500D

V2200D

Specification

- 5 m maximum immersion depth;
- Liquid Temperature up to 40°C;
- Trans Medium's PH :4-10;
- Density of the trans medium limit:1.2*10 kg/m³
- Insulation class: F
- Protection class: IP68
- Cable length: 8m

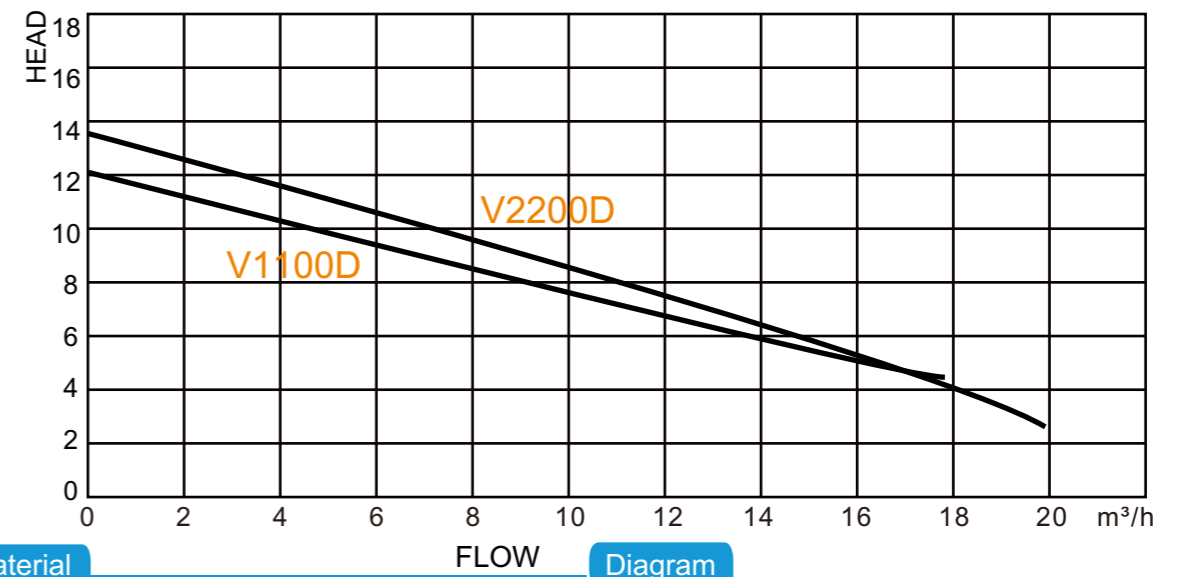
Application

- Wast water drainage in factories,construction sites
- Drainage system in municipal sewage treatment
- Drainage station in residential quarters
- Methane pools and field irrigation in country side

Special features on request

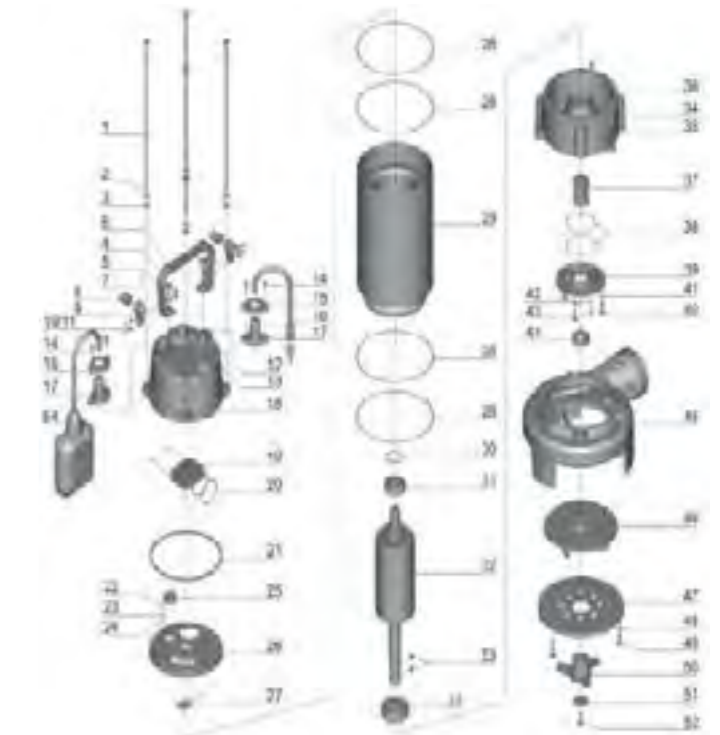
- Other voltages
- The length of cable is optional

Performance Curve



Material

Item No.	Part name	Material
08	Protector	
18	Upper Cover	Cast Iron
29	Motor Body	SS304
27	Thermal Poretctor	
31	Bearing	C&U Ball Bearing
32	Handle	Shaft AISI420SS
37	Rotor	Ceramic-SiC/Carbon-Ceramic
39	Oil Chamber Cover	Cast Iron
42	Oil Seal	
46	Impeller	Cast Iron
45	Pump Body	Cast Iron



Model	Power (W)	Outlet Diameter (mm)	Voltage (V)	Max.Flow (L/min)	Max.Head (M)	Rated Flow (m ³ /h)	Rated Head (m)	Weighr (kg)	Packing dimension (cm)
V1100D(F)	370	50	220/380	250	13	13	6	11	58*24*28
V1300D(F)	750	50	220/380	300	14	14	7	18	58*24*28
V1500D(F)	1500	50	220/380	350	15	15	9	22	58*24*28
V2200D(F)	2200	80	220/380	760	16	20	7	24	57*22*28